

1

2

3

4

A

B

C

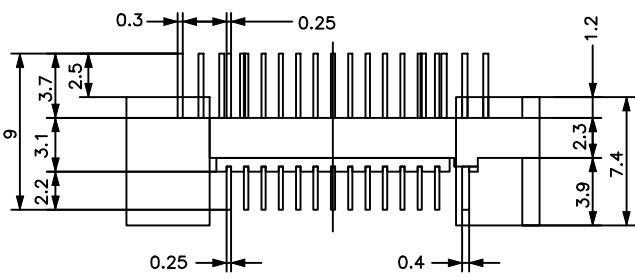
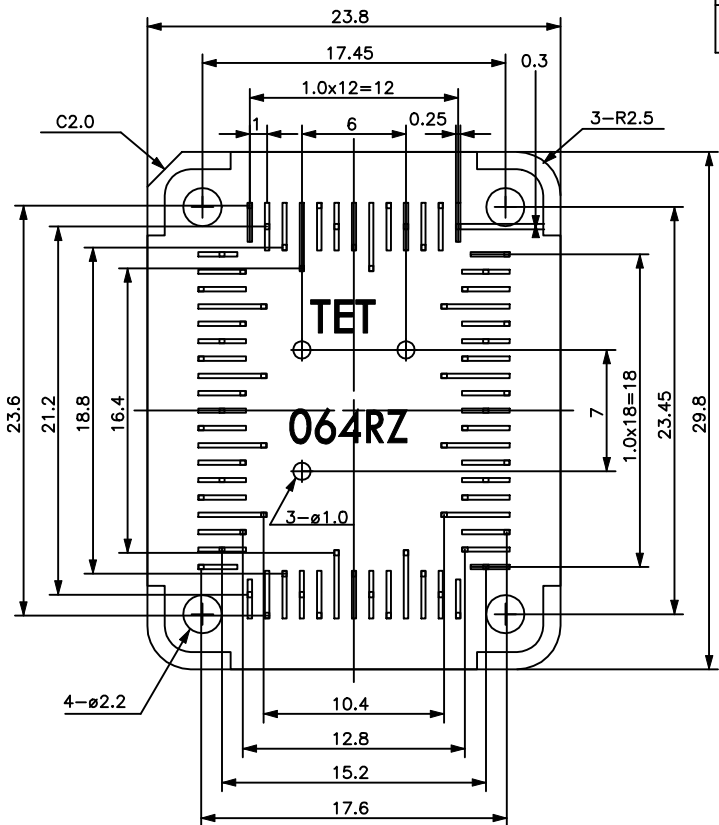
D

A

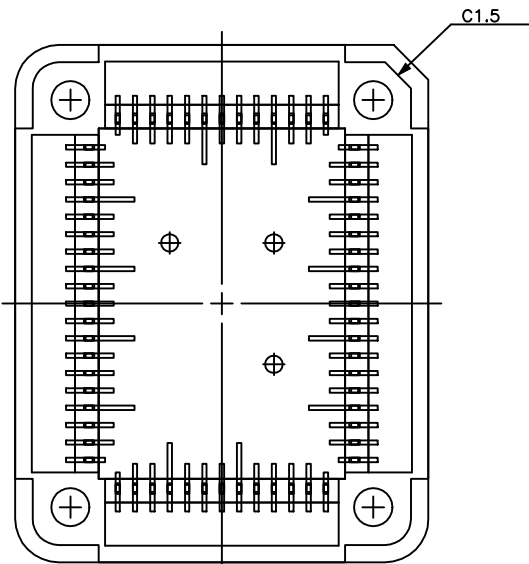
B

C

D



REVISIONS				
ZONE	REV	DESCRIPTION	DATE	APPROVED

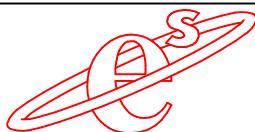


\* Applicable size of IC package : IC body size 14.0 x 20.0 mm  
IC outer size 17.6 x 23.6 mm

IC package	Rectangle
Pin count	64Pin
Lead pitch	1.0mm

**DRAWING NOT TO SCALE**

**ALL DIMENSIONS ARE IN MILLIMETERS**

 <a href="http://www.adapters.com">www.adapters.com</a>	<b>adapters.com</b> <i>An Embedded Systems Solutions Company</i>			
	DESCRIPTION: <b>BASE-HQ-064Q1R-EM-CVR</b>			
TEL:(408)855-8527 FAX:(408)855-8528 3024 Scott Blvd. Santa Clara, CA 95054	SIZE <b>A</b>	DATE: <b>12-10-01</b>	PART NO. <b>000-2122</b>	REV
SCALE <b>1:1</b>	CHECKED: <b>Gabor Kardos</b>	DRAWN BY: <b>S. Barcellos</b>	SHEET	

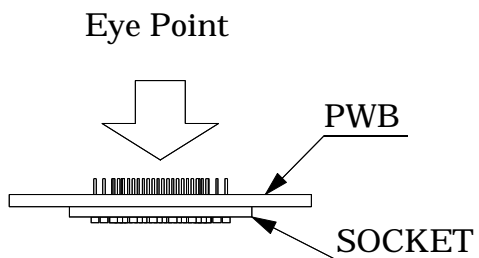
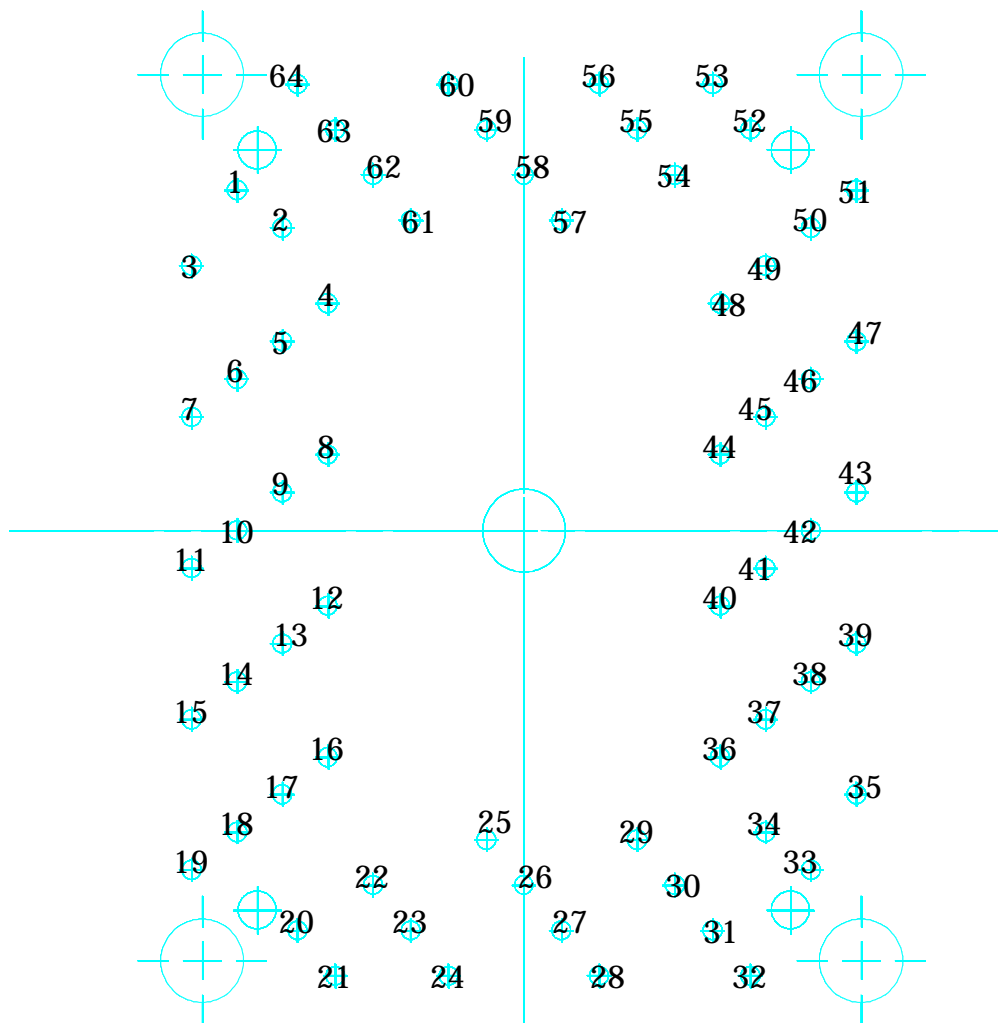
1

2

3

4

# Recommended a PWB layout of TQSOCKET/YQSOCKET64RZ Series



Part No.	<b>TQ/YQSOCKET064RZ</b>	
IC package	Rectangle	
Pin count	64	
Unit : mm	Design : M.H	
<b>TET</b> TOKYO ELETECH CORP.		

